



2021 Ride Guide



Photo by Adriane Powell



Photo by Clayton Naylor



Photo by Josh Klein



Photo by Walter Moran

What you'll find Inside:

- Info about over 20 fun rides and events
- Local bike shops around the state
- Friendly, social bike clubs in Illinois
- Reasons & ways to support Ride Illinois

Making Illinois better through biking!

2021 Ride Guide

Hey Friend!

It's never too early to start planning some adventures by bike! The **2021 Ride Guide** highlights some fun, organized rides around Illinois and in nearby states. To learn more about the events in the Ride Guide – and even more events from other bike clubs and organizations – go to rideillinois.org.

Ride Illinois shares our annual Ride Guide with over 10,000 individuals and 200 local bike shops. This is just one way that we are **working to promote safe cycling for recreation and transportation** in Illinois!

As the statewide advocacy organization, **Ride Illinois is dedicated to making Illinois more bike-friendly**. We are advocating for better road design, creating municipal bike plans, promoting trail development and funding, pushing for favorable legislation, and educating both motorists and cyclists about safely sharing Illinois roads so you can get out and Ride Illinois!

If you are already Ride Illinois member – thank you! The work we do would not be possible without your financial support.
If you are not a Ride Illinois member yet, please join today! Together, we will make Illinois a safer, more enjoyable place to ride a bike for recreation and transportation!

Contact us at info@rideillinois.org with your suggestions, concerns, thoughts and questions. Thanks!

Your Bike Pals,
Dave, Gina, Ed and the Ride Illinois board



Photo by Charlie Smyth

Reasons to Become a Ride Illinois Member



You believe in the **MANY BENEFITS** of bicycling.



You want Illinois to be a **MORE BIKE-FRIENDLY** state.



You appreciate **THE WORK WE DO** on behalf of all cyclists.



You want to **SHARE YOUR LOVE** of cycling with others.

Become a member at rideillinois.org



Ride Illinois is a member-supported nonprofit organization dedicated to making biking better across Illinois! Here are a few facts that measure our impact over the past 29 years:



Since 1992, we've worked diligently on behalf of cyclists of all ages and abilities.

Provided technical assistance to dozens of communities – from Rockford to Carbondale!



Helped craft policies: 3-foot passing law, Dutch Reach, and bikes on transit.

Our free, online BikeSafetyQuiz has been completed by over 130,000 people in Illinois!



Go to rideillinois.org to learn more about Ride Illinois and the ways we're working to make bicycling better and safer in Illinois. If you value what we do, become a member or make a donation today to support our efforts. **Together, we can do more!**

Education from League Cycling Instructors

- Do you want to learn to how to ride a bike?
- Do you want to improve your skills and confidence?
- Do you want to learn how to ride safely with traffic?

There are more than 50 League Cycling Instructors in Illinois that have been certified through the **League of American Bicyclists**. Learn more about Smart Cycling classes and find other useful resources at rideillinois.org/safety/education.

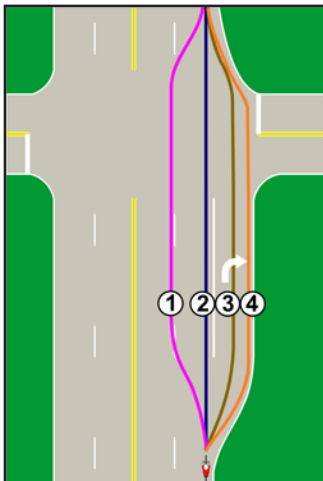
Share the Road License Plates



Support safe bicycling even when you drive! Most of the incremental fee for these state-approved specialty license plates fund Ride Illinois' driver and bicyclist education efforts. Visit rideillinois.org/share-the-road-license-plates to learn more.

BikeSafetyQuiz.com

Challenge your knowledge of relevant state laws, learn safety strategies, and help make our roads safer by completing our free quizzes. **Ride Illinois has developed quizzes for adult bicyclists, child bicyclists, motorists, and truck drivers.**



Sample Question

When going straight at an intersection WITH a right turn-only lane, where should you ride?

- (1) - Right edge of the left of two through lanes
- (2) - In the rightmost through lane
- (3) - Center of right turn lane
- (4) - Right edge of right-turn lane, by road's edge

Want to learn more?

Visit BikeSafetyQuiz.com today!

Become a member at rideillinois.org

Generous Corporate Members

Ride Illinois appreciates the support of the following businesses, foundations, and organizations for their generous contributions. **Corporate Members** help us promote bicycling for all ages around the state and assist with our bike advocacy efforts.

Diamond Level

FKLAW ILLINOIS



Platinum Level



BUILDING AMERICA[®]

Gold Level



Learn more at rideillinois.org/corporate-members

Generous Corporate Members

Silver Level



Bronze Level



KINDLE POINT

Partner Level



Friend Level



The Ride Illinois Community

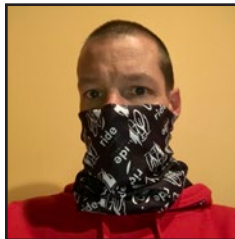
Ride Illinois wants to build community on bikes across the state and **we want you to be part of the Ride Illinois community!** We don't care how far or often you ride, whether you ride a bike for recreation or transportation (or both), what kind of bike you own, where you ride or your Strava stats. Let's pedal forward together! **Use #rideILcommunity on your social media posts.**

#rideILcommunity



Sweet Ride Illinois Merchandise

Check out a wide variety of swag, gear and other items to **show your support of Ride Illinois!** Jerseys, t-shirts, neck gaiters, car magnets and more are available on the [shop on our website](#).



You can also find a variety of items on our new [Redbubble Shop!](#)



Useful Resources

Visit the [Ride Illinois website](#) for a wealth of useful resources to help you ride your bike more, be safe and enjoy the ride!

- Finding routes
- Maps
- Bike to Metra guides
- Route guides
- Webinars
- Classes
- BikeSafetyQuiz
- Enjoy Bike-Friendly Illinois Map
- Advocacy resources

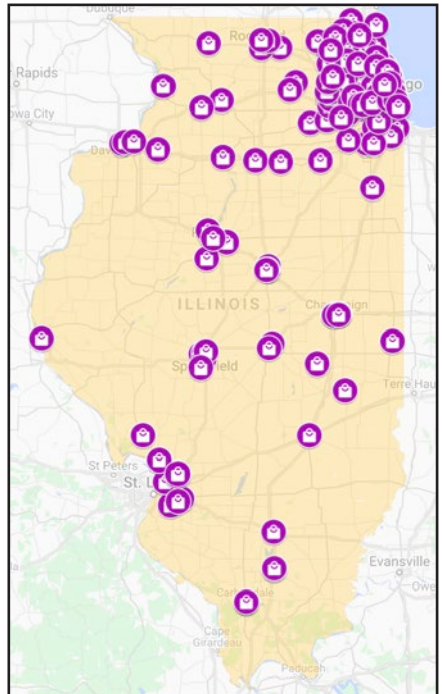
Support Illinois Bike Shops

Illinois has around **200 local bike shops throughout the state!**

Visit our regularly-updated [Enjoy Bike-Friendly Illinois map](#) to find bike shops near you.

Local bike shops and their staff have the products and knowledge for new and returning cyclists, as well as those who have been biking for many years.

We encourage you to support local bikes shops whether you're purchasing a bike, getting a bike repaired or picking up some accessories. **Please support small business and shop local!**



Safety Tip: ABC Quick Check

A is for Air

- Inflate tires to the pressure listed on the side of the tire
- Use a gauge to insure proper pressure
- Check for wear and tear; replace damaged and worn tires



B is for Brakes

- Inspect pads for wear and replace worn pads
- Check pad adjustment; make sure they do not rub
- Make sure you can fit your thumb between the brake lever and handlebar when the brakes are squeezed

C is for Cranks and Chain

- Pull up and down on your cranks. Tighten loose bolts
- Check your that your chain is free of rust and gunk

Quick is for Quick Releases

- Make sure all quick release levers are closed
- Make sure levers are pointing to the back of the bike

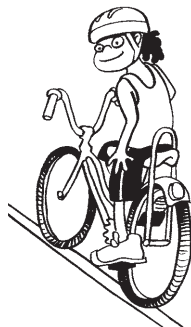
Check is for Check It Over

- Take a short ride to make sure all's well before leaving home

Safety Tip: Scanning

Scanning allows you to avoid dangerous situations before they happen. This skill also communicates to others that you are about to maneuver to another position or change lanes.

Get comfortable looking over your shoulder to see who or what's behind you – without swerving! Occasionally **checking behind you will increase your safety** when biking on roads and trails.



Affiliated Bike Clubs & Community Organizations

Ride Illinois would like to recognize these **fun, social bike clubs and community organizations** for their generous contributions:

Platinum Level (\$1,000+)

Blackhawk Bicycle & Ski Club
Evanston Bicycle Club
Joliet Bicycle Club
McHenry County Bicycle Club
Quad Cities Bicycle Club
Starved Rock Cycling Association
Wheeling Wheelmen

Gold Level (\$750 - \$999)

Fit Life Social Club

Silver Level (\$250 - \$749)

Arlington Heights Bicycle Club
Bike Psychos
Decatur Bicycle Club
DuPage Cycling Foundation
Downers Grove Bicycle Club
Elmhurst Bicycle Club
Folks On Spokes Bicycle Club
Fox Valley Bicycle & Ski Club
Friends of Cycling in Elk Grove
GOATS Bicycle Club of Galena
Illinois Valley Wheelm'n
Kankakee River Bike Club
McLean County Wheelers
Springfield Bicycle Club

Bronze Level (\$100 - \$249)

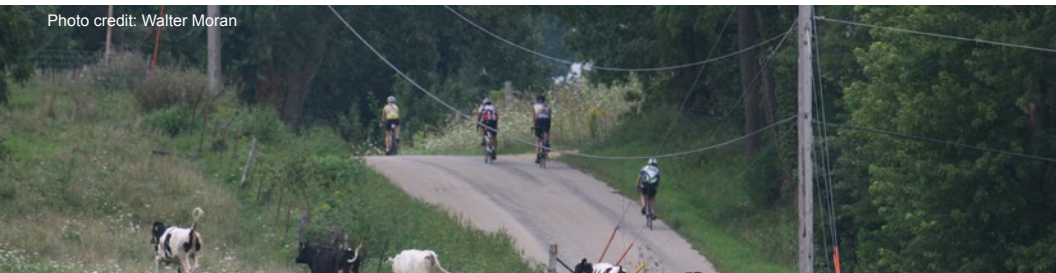
Bicycle Club of Lake County
Bike Palatine
Chicago Area Tandem Society
Chicago Cycling Club
Kish Bike and Rec Club
Tri Right Coaching
Oak Park Cycle Club
Prairie Cycle Club
Schaumburg Bicycle Club
Team224, Inc.
Z Tour

Friend Level (\$1 - \$99)

Boxing Out Negativity
City of Warrenville Bicyclist &
Pedestrian Advisory Commission
Rock River Valley Bicycle Club
Ten 27 Cycling Club

Click here to learn more about our affiliated bike clubs and community organizations.

Photo credit: Walter Moran



2021 Ride Guide

Date	Ride	Start City	Organizer	#
May 1	Ride the Ups & Downs	Elizabeth	GOATS Cycling	14
May 19	Ride of Silence	many locations	Ride of Silence	--
May 21	Illini Weekend Getaway	Champaign	Bicycle Illinois	15
May 30	McHenry County Century Ride	Lake in the Hills	True Blue Dogs/People for Parks/RPT	16
June 6	FOS Spring Fling	Monee	Folks on Spokes	17
June 11-13	TOMRV	Bettendorf, IA	Quad Cities Bicycle Club	18
June 13-18	Grand Illinois Bike Tour	Litchfield	Ride Illinois	19
June 13	Blood, Sweat and Gears Cycling Series	Lansing	Fit Life Social Club	20
June 19	Food Bank Flyer	Normal	Team 224	21
July 1-17	Z Tour	Virtual	Z Tour	22
July 4	4th of July Century	Plainfield	Joliet Bicycle Club	23
July 18	Biking with Beanzie	DeKalb	Kish Bike & Rec Club	24
July 31-Aug. 12	CowaLUNGa	Gurnee	Respiratory Health Association	25
July 30-Aug. 2	Ride Across Wisconsin	La Crosse, WI	Wisconsin Bike Fed	26
Aug. 1	Harmon 100	TBD	Wheeling Wheelmen	27
Aug. 7	Hammer for Hope	Dixon	Rock Riv. Vly. Bicycle Club	28
Aug. 15	Everybody Rides	St. Charles	Project Mobility	29
Aug. 21	Street Love Ride	Chicago	Boxing Out Negativity	30
Aug. 21	Ride Like an Egyptian	DeKalb	Kish Bike & Rec Club	31
Aug. 28	Busse Woods Night Ride	Elk Grove Village	Friends of Cycling in Elk Grove	32
Aug. 28	No Baloney Bike Ride	Morton	Illinois Valley Wheelm'n	33
Aug. 29	Bike for the Kids	Elgin	Easterseals DFV	34
Sept. 12	Swedish Days Ride	Maple Park	Fox Valley Bike & Ski Club	35
Sept. 18	Amish Country Tour	Arthur	Decatur Bicycle Club	36
Sept. 19	North Shore Century	Evanston	Evanston Bicycle Club	37
Sept. 25	Heartland Century	Geneseo	Quad Cities Bicycle Club	38
Sept. 26	Tour de Cure	Virtual	American Diabetes Assoc.	39



250 person limit • fully supported • 200 to 375 miles

Explore the Trails of Madison County and the Metro East area on our fully-supported ride. Ride on paved trails and quiet roads, plus experience the charming towns and landscapes of our grand Illinois.



ride
ILLINOIS

Learn more at rideillinois.org

Make memories on the hills of Jo Daviess County



RIDE THE UPS & DOWNS



Saturday, May 1, 2021

Free pair of GOATS socks with advance registration!!!

Routes: 32, 52 and 63 miles

Includes map/cue sheets; marked routes, SAG support; rest stops **WITH** freshly baked homemade cookies.

Information/registration:

goatscycling.com/events or

bikereg.com/ride-the-ups-and-downs

Keeping everyone safe & happy is the primary concern. Riders are asked to follow social distance protocols and wear a mask at registration, rest stops and in SAG vehicles.

Questions? Email: goatscycling@gmail.com



BICYCLE ILLINOIS



BIKE

WISCONSIN

Now owned & operated by Bicycle Illinois!

2021 EVENT SCHEDULE

Illini Weekend Getaway

*Champaign, IL
May 21st - 23rd*

GRABAAWR

*Eagle River to Prairie du Chien, WI
June 12th - 19th*

Ride Across Illinois (RAIL) North

*Moline to Chicago, IL
June 20th*

Ride Across Illinois (RAIL) South

*St. Louis, MO to Vincennes, IN
June 26th*

Bike Northwoods Tour

*Boulder Junction, Park Falls, & Mercer WI
July 4th - 10th*

Tri-State Tour Chicago Century #1

*Hammond, IN to Kenosha, WI
July 12th*

RAGBRAI® Transportation Service

*Chicago, IL to the start and from the end of RAGBRAI
July 24th and July 31st*

SAGBRAW

*Wisconsin Dells, Green Lake & Columbus, WI
August 7th - 13th*

Bicycle Illinois

*Cairo to Chicago, IL
August 21st - 27th*

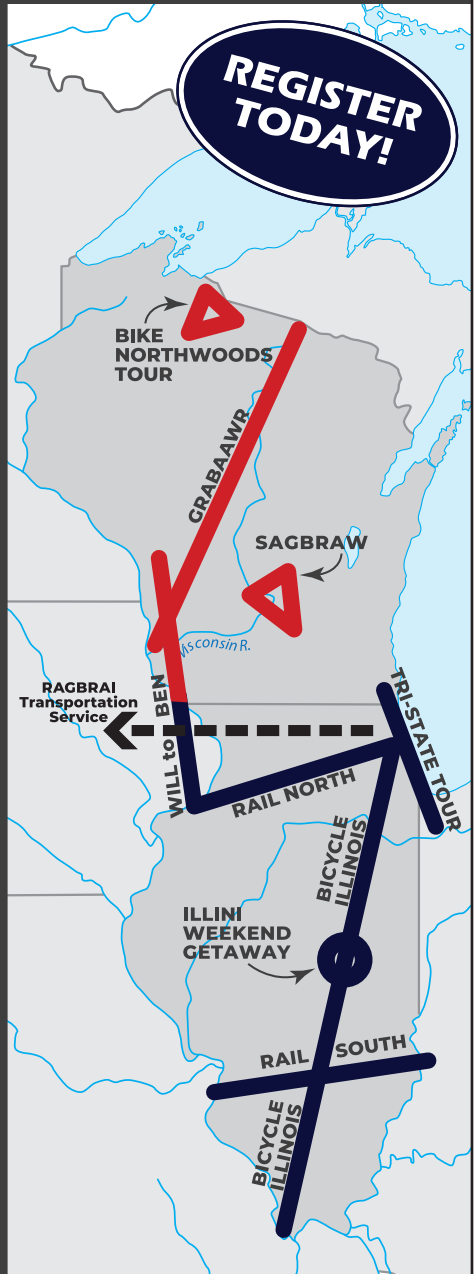
Tri-State Tour Chicago Century #2

*Hammond, IN to Chicago, IL
August 28th*

Will to Ben

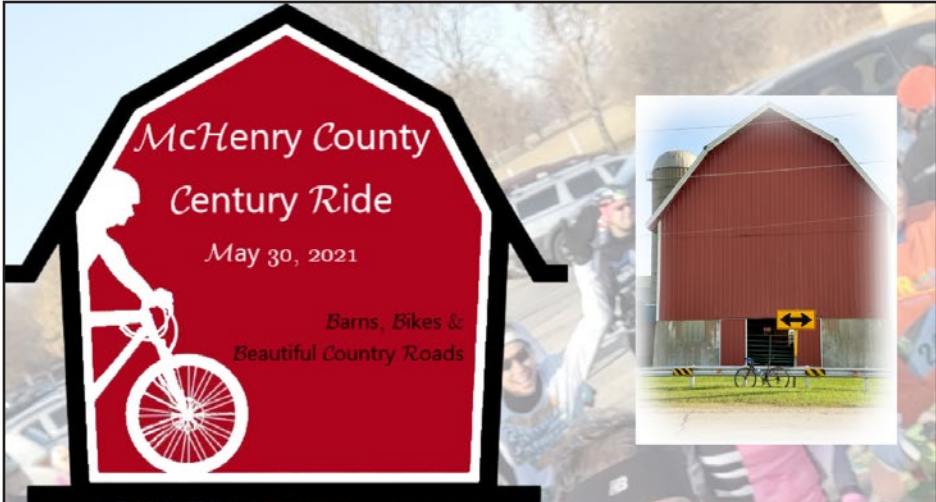
*Port Byron, IL to Sparta, WI
October 2nd - 8th*

REGISTER TODAY!



(877) TOUR-ILL
bicycleillinois.com

(888) BIKE-WI-1
bikewisconsin.com



Sunday, May 30, 2021

Rediscover McHenry County, Illinois

Distances 26-104 miles

SAGS - Downloadable Routes

Rest Stops



Register [HERE](#)



FOLKS ON SPOKES



BICYCLE AND HIKING CLUB
ALL SEASON ADVENTURES

**40TH ANNUAL
SPRING FLING
(FORMERLY THE EASTER RIDE)**

Sunday June 6 2021

New Start Location:
Monee Reservoir
27341 South Ridgeland Ave
Monee, IL

**Cloverleaf routes 18+19+44 miles
Registration Open May 1st
Register Online:
www.folksonspokes.com**

LET'S DO THIS

**EXPERIENCE A CHALLENGING, REWARDING
AND WELL-SUPPORTED BIKE RIDE**

**2 DAYS OF CYCLING • 2 CENTURY OPTIONS
2 SHORTER MILEAGE OPTIONS EACH DAY**

REGISTER ONLINE AT:
QCBC.ORG/TOMRV or GETMEREREGISTERED.COM/TOMRV



>>> JUNE 11 - 13 <<<

A QUAD CITIES BICYCLE CLUB EVENT



250 person limit • fully supported • 200 to 375 miles

Explore the Trails of Madison County and the Metro East area on our fully-supported ride. Ride on paved trails and quiet roads, plus experience the charming towns and landscapes of our grand Illinois.



ride
ILLINOIS

Learn more at rideillinois.org

2021 BLOOD, SWEAT AND GEARS CYCLING SERIES

FOUR RIDES
250 TOTAL MILES
NEW & FAMILIAR ROUTES
GOODIE BAGS
PARTICIPANT SHIRTS
FINISHER MEDALS
POST RIDE PARTIES
...and more!

**REGISTRATION OPENS
APRIL 16, 2021**

BSGCYCLING.COM

FIT LIFE SOCIAL CLUB

\$45

MEMBER DISCOUNT
GOODIE BAG
FINISHER MEDAL
POST RIDE PARTY
ALL LEVELS WELCOME

Provided by Sponsor

BSGCYCLING.COM

BLOOD, SWEAT AND GEARS CYCLING SERIES

THE HERALD HAUL
JUNE 13, 2021 • 25 MILES • 7AM

MEET: LANING WOODS • 186TH EAST OF TORRENCE AVE
RIDE: THORNTON CREEK TRAIL

REIGN nékter since 2008

FIT LIFE SOCIAL CLUB

\$45

MEMBER DISCOUNT
GOODIE BAG
FINISHER MEDAL
POST RIDE PARTY
ALL LEVELS WELCOME

Provided by Sponsor

BSGCYCLING.COM

BLOOD, SWEAT AND GEARS CYCLING SERIES

THE RAVINIA RIDE
JULY 18, 2021 • 60 MILES • 7AM

MEET: NORTHERLY ISLAND • 1521 S. LINN WHITE DR
RIDE: LAKESHORE DRIVE TRAIL

REIGN nékter since 2008

FIT LIFE SOCIAL CLUB

\$45

MEMBER DISCOUNT
GOODIE BAG
FINISHER MEDAL
POST RIDE PARTY
14-15MPG AVG

Provided by Sponsor

BSGCYCLING.COM

BLOOD, SWEAT AND GEARS CYCLING SERIES

A RIVER RUNS THROUGH IT
AUG 22, 2021 • 75 MILES • 6AM

MEET: ICE ARENA • 1601 RIVER RD, KANKAKEE, IL
RIDE: ALONG THE KANKAKEE RIVER

REIGN nékter since 2008

FIT LIFE SOCIAL CLUB

\$45

MEMBER DISCOUNT
GOODIE BAG
FINISHER MEDAL
POST RIDE PARTY
14-15MPG AVG

Provided by Sponsor

BSGCYCLING.COM

BLOOD, SWEAT AND GEARS CYCLING SERIES

RIDE OF THE CENTURY
SEPT 26, 2021 • 100 MILES • 6AM

MEET: BATAVIA RIVERWALK • 100 N ISLAND AVE, BATAVIA, IL
RIDE: FOX RIVER & PRAIRIE TRAILS

REIGN nékter since 2008



SAVE THE DATE!

2021 Food Bank Flyer

A ride to benefit Midwest Food Bank

Date: Saturday, June 19, 2021

20 • 40 • 60 Mile routes

Lunch served • Rain or shine

The Food Bank Flyer offers multiple routes through beautiful central Illinois countryside. Due to support from generous sponsors, 100% of the proceeds go directly to Midwest Food Bank.



Team **224**
EST 2012 **MATTHEW 25:35-36**

For complete details or to register, go to **Team224.org**



Virtually anywhere!

Z Tour Bike Ride

July 1st-17th, 2021

"Show and Go" Routes will be featured each weekend leading up to the day of the ride.

Choose one of our featured routes or you can ride anywhere you choose and any date you choose!

T-shirt for every ticket purchase!
Register at Eventbrite.
Sponsorship ticket options available!



See ztour.org for updates

princeton
ILLINOIS



jolietbicycleclub.com

Visit our [website](http://jolietbicycleclub.com) for more information



6:30 AM Ride Start!
33% Discount on a JBC Membership!

- Come Celebrate the 47th Annual 4th of July Century!
- Pre-register between April 1 - June 30 for only \$25.
- Register on July 4th for \$30.
- Start Location: Plainfield South High School.
- 7800 West Caton Farm Rd, Plainfield, IL.
- Very Low Traffic Roads in Kendall County.
- Choose from 25, 50, 75, and 100 mile routes.
- Receive a 33% discount on a JBC membership when bundled with your registration.*
- Visit the [JBC Website](http://jolietbicycleclub.com) for more details.

Rider Testimonials:
 "I look forward to this ride every year!"
 "It's a quality ride for a great price."
 "JBC has the best SAG support I have ever experienced."

Questions: jbc4thride@gmail.com



Kishwaukee Kiwanis Club of DeKalb

Biking with Beanie

Sunday, July 18, 2021

**BEANZIE
RIDE IS
BACK!**

Multiple Ride Distances Available

Registration FREE for Kids 12 & under
(w/ paid adult rider)



COVID-19 Precautions

- To ensure a safe and enjoyable ride experience, we will follow appropriate local and state health COVID-19 guidelines, and expect all ride participants to do so as well.
- Hydration options and individually-packed snacks will be available.

More Ride Info and Registration

www.kishkiwanis.org

Facebook

beanzieride

COWALUNGA

CHARITY BIKE TOUR



JULY 31 - AUGUST 2 | ALL EXPERIENCE LEVELS WELCOME

**CELEBRATING 25 YEARS OF GREAT RIDES
FOR HEALTHY LUNGS AND CLEAN AIR!**

This scenic ride through N. Illinois & S. Wisconsin is fully supported with SAG vehicles, volunteer medical, bike mechanics, gear transportation, & stocked rest stops. Our staff and volunteers go the extra mile to make sure you have an amazing ride.

The 2021 CowaLUNGA tour will follow all federal, state, and local public health guidelines. Please visit our website to learn more about our plans for a safe & healthy event this year.

Learn more



resphealth.org/ridecow



RESPIRATORY
HEALTH
ASSOCIATION®



Beautiful.



Hard.



Epic.



#worthit

225 MILES
1, 2, 3 & 4 DAY OPTIONS



**July 30th-
August 2nd 2021**

For more info please visit
RideAcrossWisconsin.Com

Ride Across Wisconsin
is a fundraiser for the
Wisconsin Bike Fed.



**WISCONSIN
BIKE FED**
wisconsinbikefed.org

COMING AUGUST 2021



www.wheelmen.com



WHEELING WHEELMEN

HARMON

100



New, familiar Location

**BACK IN
ILLINOIS!**

August 7, 2021



Dixon, IL 61021

100K/100 mi/50K/10 mi

Registration:
homeofhopeonline.org

Adults 14+ \$35/before 7/11/ with t-shirt
\$45 after 7/12 with t-shirt
Youth 13 & under \$20 w/pd adult-no T

Proceeds benefit
Home of Hope Cancer Wellness Center
815.288.4673 for information

Healthy Bike Ride for All Ages
SAG supported w/rest stops



9th ANNUAL

EVERYBODY

RIDES

PRESENTED BY



RIDE.
SPONSOR.
DONATE.
VOLUNTEER.

SUNDAY
AUGUST 15TH

James O. Breen Park

Corner of Peck Rd & Compton Hills Rd
St. Charles, IL

10 Mile Trail Ride
29 Mile Road Ride
47 Mile Road Ride
62 Mile Road Ride



REGISTER NOW!

EVERYBODYRIDE.ORG

STREET LOVE RIDE

Rolling Deep for Peace
in North Lawndale

Saturday
August 21, 2021

RSVP: streetlove2021.eventbrite.com
(there's no fee to participate!)

5-8pm: Community Expo & Cookout
8-10pm: Ride & Call to Action

St. Agatha Catholic Church
3147 W. Douglas Blvd.
in Chicago



Photo by Norvell Tolbert of Norvell's Photography

Come join the phenomenon as we gather in love and positivity for our

2ND ANNUAL STREET LOVE RIDE

Boxing Out Negativity's annual Bike Ride for Peace evolved into a citywide phenomenon in 2020, when more than 400 riders from across Chicagoland showed up for our inaugural **Street Love Ride**.

We felt the love on that ride, and it deepened our belief that our city stands strongest in the fight against violence when we stand as one!

Learn more at boxingoutnegativity.org/event/street-love-ride-2021

Contact Julie Globokar at info@BoxingOutNegativity.org to sponsor this event.



RIDE...
LIKE AN EGYPTIAN

SATURDAY
AUGUST 21
2021

A BENEFIT FOR THE HISTORIC
EGYPTIAN THEATRE

25/50/75/100 MILE ROUTES

STARTS AT EGYPTIAN THEATRE

135 N. SECOND ST. | DOWNTOWN DEKALB, IL

REGISTER AT:

WWW.RLAE.ORG



Northwestern
Medicine

COVID-19 MITIGATION CHANGES
WILL BE IN PLACE FOLLOWING CURRENT RECOMMENDATIONS

2021

Busse Woods Night Ride

Saturday August 28th



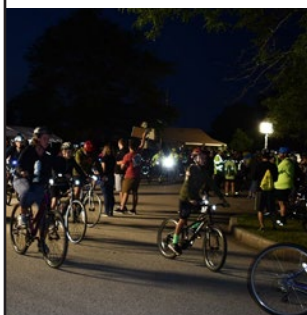
RIDE THE BUSSE WOODS TRAIL AT NIGHT!

The Friends of Cycling in Elk Grove and Forest Preserves of Cook County are hosting this exciting, unique event. It's the one and only day when you can ride the trail at Busse Woods after dark! This event/fundraiser takes place at the Busse Lake Boating Center in Busse Woods.

Additional activities, amenities and entertainment will be determined prior to the event based on the latest public health guidelines.

All revenue generated by this event will be used to support safe cycling in Elk Grove Village, the northwest suburbs of Chicago and Busse Woods.

For more information, visit egvbikes.org/busse-woods-night-ride



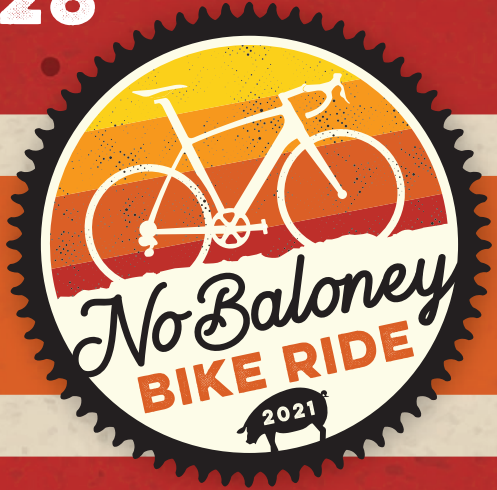
Click to Register!

2021 Ride Guide

48TH ANNUAL

SATURDAY
AUGUST 28

@KENNEL LAKE
Sportsmen's Club
MORTON, ILLINOIS



TO REGISTER OR FOR MORE INFORMATION:
IVWnobaloney.com

PRESENTED BY:
ILLINOIS VALLEY WHEELM'N



20 MILES



45 MILES



65 MILES



100 MILES

TOP NOTCH **REST STOPS** | DOWNLOADABLE **ROUTES**
TENT CAMPING AVAILABLE



Share in the joy of cycling with children with developmental delays and disabilities.

CHOOSE YOUR DISTANCE



PLUS A FAMILY FUN RIDE FOR ALL AGES & ABILITIES

Bike for the Kids is a supported road ride with rest stops, SAG vehicle & post-party



Rich Howe Photography

[EASTERSEALSDFVR.ORG/BIKEFORTHEKIDS](https://eastersealsdfvr.org/bikeforthekids)

AUGUST 29, 2021 | ELGIN IL

USE DISCOUNT CODE: **RIDEIL** FOR \$5 OFF

\$40 early bird pricing until July 30

2021 SWEDISH DAYS RIDE

51ST YEAR



The Fox Valley Bicycle & Ski Club's premier recreational bike tour featuring quiet, scenic, paved roads through rural Kane, Kendall and DeKalb counties.

SUNDAY, SEPTEMBER 12, 2021

Maple Park, Illinois

25 • 50 • 72 • 100 • 124 mile routes

Featuring the Double-Metric Century

Fully supported with SAG and indoor rest stops

www.fvbsc.org



SUPPORTING:



ACTIVE
TRANSPORTATION
ALLIANCE



projectmobility
Changing lives one bike at a time



36th Amish Country Tour

September 18, 2021

**20, 40, or 60 mile
loops through
beautiful Amish
Countryside**



For more information and to register, visit;
decaturbicycleclub.org/amish-country-tour/

-----Also sponsored by-----



**Atwood
Chamber of Commerce**



**Arcola
Chamber of Commerce**



**Arthur
Chamber of Commerce**

EVANSTON BICYCLE CLUB

— EBC CELEBRATES 50 YEARS! —

NORTH SHORE CENTURY

SUNDAY SEPTEMBER 19, 2021

— ROUTES OF 25, 50, 62, 100 —

THE JOY IS IN THE JOURNEY

The Evanston Bicycle Club's North Shore Century offers incredibly scenic biking on routes of 25, 50, 62, and 100 miles. You'll experience beautiful neighborhoods, view unique architectural treasures, pedal down tranquil tree-lined streets and feel the refreshing breezes of Lake Michigan. There are frequent, well-stocked rest stops. Sags and bike mechanics are provided. **Helmets are strongly urged!!**

The 2021 North Shore Century is on **Sunday, September 19**. All rides start and end at Dawes Park (near the corner of Church Street and Sheridan Road) in Evanston, IL.

For more info and to register, go to www.northshorecentury.org | [#northshorecentury](https://twitter.com/northshorecentury)



Registration and Fees

- July 1 - August 12, 2021\$30
- August 13 - September 16, 2021\$40
- Day-of-Ride.....\$60
(Registration ends at 11a.m.)
- Riders age 17 and under.....\$10
(Must be accompanied by a registered adult rider.)

COMMEMORATIVE
T-SHIRT AVAILABLE



The Evanston Bicycle Club will comply with all state and local COVID-19 guidance in effect at the time of the 2021 North Shore Century, including any requirements pertaining to face coverings, maintaining social distancing, and sanitizing.

Heartland Tour and Century 2021

Presented by The Geneseo Brewing Company

and

Quad Cities Bicycle Club

**Saturday, 9/25
7am - 9am Start Time**

**4 aprox. 25 mile loops all start and end at
Geneseo Brewing Company
102 S. State St., Geneseo, IL**

**Ride a short family ride, metric century or
complete all of them for a whole century.**

**Lunch provided by GBC with registration
register at QCBC.org**

30 Years
Connected for a Cure



TOUR
de **CURE** 
American Diabetes Association.

Chicagoland Tour de Cure
Sunday, September 26, 2021

Register today:
diabetes.org/chicagotour
1-888-DIABETES, ext. 6562

National Sponsor:

Walmart 

PRIMAL 



ride
ILLINOIS

815 Leicester Rd. #314
Elk Grove Village, IL 60007

